

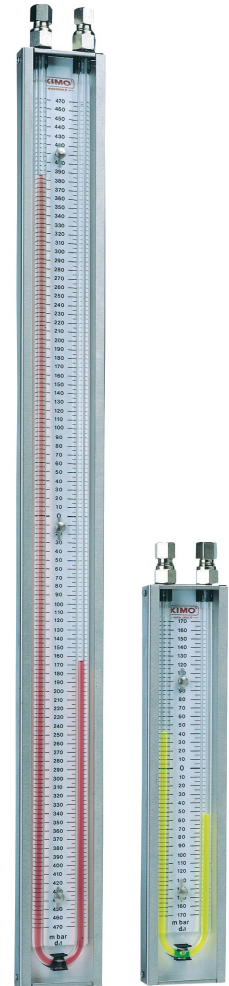
GFI serie VERTICAL LIQUID COLUMN MANOMETERS

Pressure / Depression

KEY POINTS

The GF range of vertical liquid column manometers, developed and manufactured by KIMO, are mainly for checking pressures in gas networks.
(See table below)

- "U"-shaped column for measuring consecutively positive and negative pressures
- Measurement by addition of values read on each column
- For fixed and portable use
- Zero adjustment by moving the slide strip
- Possibility of resisting static pressures from 10 to 40 bars (according to the length of the tubes)
- Altuglas column sunk into the solid block
- Supplied with manometric liquid, 2 screws and 2 rawlplugs



MEASURING RANGES

	Reference	Measuring range		Resolution	
		mm CE	mbar	mm CE	mbar
VF1 LIQUID	GFI 500	250 – 0 – 250	25 – 0 – 25	1	0,5
	GFI 1000	500 – 0 – 500	50 – 0 – 50		

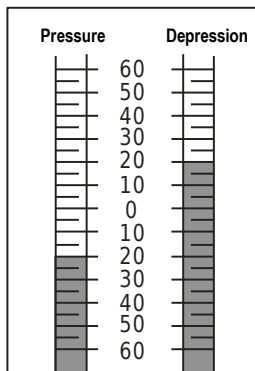
TECHNICAL FEATURES

Recommended operating temperature	From +5 to +30°C
Possible operating temperature	From -30 to +60°C
Maximum static pressure	15 bars
Manometer body	PVC of 19 mm thickness
Liquid column	Tube Ø 6 X 10 mm in pyrex
Graduated slide strip	Transparent altuglas. Cross-section 54 X 3 mm
Zero adjustment	By moving the graduated slide strip, travel 20 mm. Fixed via milled, nickel-plated brass screw
Manometric liquid	VF1 liquid, density 13.545
Connection	Industrial ¼ gas female
Wall mounting	Ø 5 X 25 mm 2 screws and 2 rawplugs
Protective housing	304-L brushed stainless steel, thickness: 0.8 mm

DIMENSIONS

Reference	GFI 500	GF 1000
a	607 mm	1107 mm
b	72 mm	72 mm
c	27 mm	27 mm
Distance between tubes	571 mm	1071 mm
Weight	1550 g	2800 g

READING



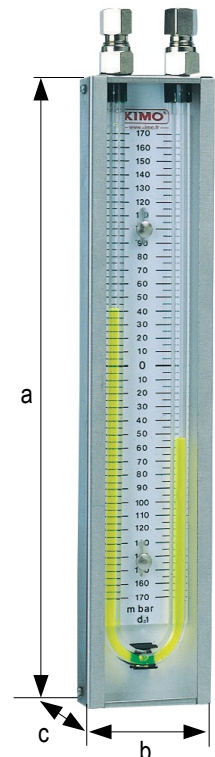
To read the measurement : add the values read on each column.
Example shown on left :
 $20 + 20 = 40$ mbar

MOUNTING

- Mount** the manometer on a wall or partition wall with two maximum $\text{Ø } 5 \times 25$ mm screws and rawplugs.
- Unscrew** one of the connection and **slowly pour the manometric liquid** up to zero point on graduation.
- Connect** the manometer with the $\text{Ø } 5 \times 8$ mm crystal tube to the pressure or depression source to be checked.

NOTES :

For a **pressure** measurement..... Connect the crystal tube to **one of the two connectors**
 For a **depression** measurement..... Connect the crystal tube to **one of the two connectors.**
 For a **differential pressure** measurement..... Connect both tubes to **both connections**



www.kimo.fr

Distributed by :



EXPORT DEPARTMENT

Tel : + 33. 1. 60. 06. 69. 25 - Fax : + 33. 1. 60. 06. 69. 29

e-mail : export@kimo.fr